

JACARANDA COUNTRY CLUB VILLAS

A CONDOMINIUM, SARASOTA COUNTY, FLORIDA

PHASE 14

PHASE 15

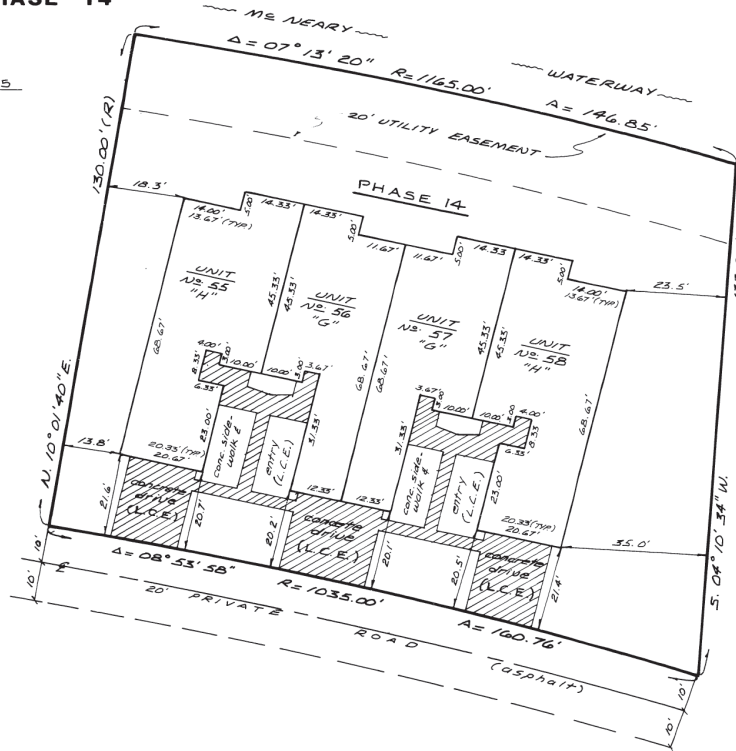
DESCRIPTION OF PHASE 14

COMMENCE AT THE MOST EASTERLY POINT OF LOT 34000 C, SECTION 3, UNIT 34, VENICE GARDENS SUBDIVISION, ACCORDING TO THE PLAT RECORDED IN PLAT BOOK 22, AT PAGES 39-39G OF THE PUBLIC RECORDS OF SARASOTA COUNTY, FLORIDA; THENCE, SOUTH 46°50'18" WEST, 473.69 FEET, THENCE, SOUTH 64°10'10" WEST, 250.00 FEET, THENCE, NORTH 80°49'50" WEST, 237.00 FEET, THENCE NORTH 09°19'50" WEST, 335.00 FEET, THENCE, NORTH 43°04'50" WEST, 229.00 FEET, THENCE, NORTH 08°55'10" EAST, 209.00 FEET, THENCE, SOUTH 89°04'50" EAST, 330.00 FEET TO THE POINT OF CURVATURE OF A CURVE TO THE RIGHT, THENCE, ALONG THE ARC OF SAID CURVE, HAVING A RADIUS OF 1165.00 FEET, A CENTRAL ANGLE OF 09°06'30", FOR AN ARC DISTANCE OF 185.20 FEET TO THE POINT OF BEGINNING; THENCE, CONTINUE, ALONG THE ARC OF SAID CURVE HAVING A RADIUS OF 1165.00 FEET, A CENTRAL ANGLE OF 07°13'20", FOR AN ARC DISTANCE OF 146.85 FEET TO THE END OF SAID CURVE, THENCE, SOUTH 04°10'34" WEST, 133.92 FEET TO THE INTERSECTION WITH A CURVE TO THE LEFT WHOSE CENTER BEARS, SOUTH 18°55'38" WEST, THENCE, ALONG THE ARC OF SAID CURVE, HAVING A RADIUS OF 1035.00 FEET, A CENTRAL ANGLE OF 08°53'58", FOR AN ARC DISTANCE OF 160.76 FEET, THENCE, NORTH 10°01'40" EAST, 130.00 FEET TO THE POINT OF BEGINNING.

Subject to all other easements shown hereon and easements and restrictions of record.

NOTES:

- EACH CONDOMINIUM UNIT IS IDENTIFIED BY A NUMBER AS SHOWN HEREON.
- THIS CONDOMINIUM PLAT IS SUBJECT TO ALL THE PROVISIONS OF THE DECLARATION OF CONDOMINIUM TO WHICH THIS PLAT IS ATTACHED AS EXHIBIT "A".
- A UNIT SHALL CONSIST OF SPACE BOUNDED BY A VERTICAL PROJECTION OF THE RESPECTIVE UNIT BOUNDARY LINES SHOWN HEREON REPRESENTING THE OUTSIDE OF THE FINISHED SURFACE OF THE OUTSIDE WALLS AND THE CENTER LINE OF COMMON WALLS WHERE APPLICABLE, AND FROM THE PLANE OF THE BOTTOM OF THE FOUNDATION OF THE STRUCTURE TO THE PLANE OF THE PEAK OF THE ROOF AND SHALL INCLUDE THE OVERHANG, EAVES, WINDOW SILLS, PORCHES, STOOPS AND ALL PROJECTING INTEGRAL PARTS OF THE STRUCTURE, WHETHER INDICATED ON THE PLAT OR NOT.
SUBJECT TO EASEMENTS THROUGH UNITS FOR CONDUITS, DUCTS, PLUMBING, WIRING AND OTHER FACILITIES FOR THE FURNISHING OF UTILITY SERVICES TO UNITS AND THE COMMON LIMITED ELEMENTS.
- DRIVEWAYS AND WALKWAYS SHALL BE LIMITED COMMON ELEMENTS RESERVED TO THE EXCLUSIVE USE OF UNITS TO WHICH THEY ARE ADJACENT.
- VARIANCES FROM TYPICAL UNIT DIMENSIONS VERSUS AS-CONSTRUCTED DIMENSIONS ARE SHOWN HEREON.



SURVEYOR'S CERTIFICATE

I, EDWARD A. REDINGTON OF EDWARD A. REDINGTON & ASSOCIATES, INC. HEREBY CERTIFY THAT THE CONSTRUCTION OF THE IMPROVEMENTS IN PHASE 14, UNITS 55 THROUGH 58, INCLUSIVE, IS SUBSTANTIALLY COMPLETE SO THAT THE MATERIAL, THAT IS, SURVEY EXHIBIT "A" SHEETS 1 THROUGH 3, ALL OF WHICH ARE EXHIBITS ANNEXED TO AND MADE A PART OF THE DECLARATION OF CONDOMINIUM OF JACARANDA COUNTRY CLUB VILLAS, A CONDOMINIUM, TOGETHER WITH THE PROVISIONS OF THE DECLARATION DESCRIBING THE CONDOMINIUM PROPERTY AS IT RELATES TO MATTERS OF SURVEY IS AN ACCURATE REPRESENTATION OF THE LOCATION AND DIMENSIONS OF THE AFOREMENTIONED IMPROVEMENTS IN PHASE 14, AND THAT THE IDENTIFICATION, LOCATION AND DIMENSIONS OF THE COMMON ELEMENTS AND OF EACH UNIT CAN BE DETERMINED FROM THESE MATERIALS, AND THAT THE SURVEY WAS PERFORMED IN ACCORDANCE WITH THE MINIMUM TECHNICAL STANDARDS SET FORTH BY THE FLORIDA BOARD OF LAND SURVEYORS, PURSUANT TO SECTION 472.027 FLORIDA STATUTES.

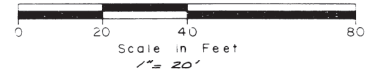
EDWARD A. REDINGTON & ASSOCIATES, INC.

DATE: 3/20/84

By: *[Signature]*
REGISTERED LAND SURVEYOR
STATE OF FLORIDA CERTIFICATE #3023

EDWARD A. REDINGTON & ASSOCIATES, INC.

Professional Engineers & Land Surveyors
1670 Main Street, Sarasota, Florida 34236



SEP 18 11 49 AM '84

FILED IN THE OFFICE OF THE CLERK OF THE CIRCUIT COURT IN AND FOR SARASOTA COUNTY, FLA.

4 2 3 / 2 0